

VE-LOCK PRODUCT RANGE

VE-LOCK

DIN 2353 TYPE -FERRULE FITTINGS

VISUAL INDEX -SINGLE FERRULE FITTINGS

DIN 2353 - ISO 8434-1

Tube Fittings Accessories

DIN 2353 - ISO 8434-1



Nut - N



Ferrule -F



Soft sealing Ring -DAZ



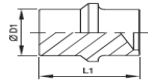
Weld Nipple



Support Sleeve



closure plug



blanking plug



Vsti Plug



Hex Plug



Check Nut

Tube to Tube Fittings

DIN 2353 - ISO 8434-1



Equal Union - G



Equal Elbow - W



Equal Tee - T



Equal Cross - K



Bulkhead Union -SV



Bulkhead Elbow - WSV



Unequal Union - GR



Unequal Tee -TR

Tube to Swivel Fittings

DIN 2353 - ISO 8434-1



Swivel Elbow -EVW



Swivel Branch Tee -EVT



Swivel Run Tee -EVL



Tube End Reducer -RED



Tube End Reducer -KOR



Distance Piece Adaptor

wire swivel elbow -EW

wire swivel Branch Tee

Wire Swivel Run Tee -EL

Swivel to Swivel Fittings

DIN 2353 - ISO 8434-1



Swivel Equal Union



Swivel Reducer

Male Stud Couplings

DIN 2353 - ISO 8434-1



GEO



GE-R



GE-R-ED



GE-R-KEG



GE-M



GE-M-ED



GE-M-KEG



GE-UNF/UN



GE-NPT



EGE-O



EGE-M-ED



EGE-R-ED



EVGE-R-ED



EVGE-NPT

Lock Nut Adjustable Fittings

DIN 2353 - ISO 8434-1



WEE-OR



WEE-M



WEE-R



WEE-UNF



TEE-OR



TEE-M



TEE-R



LEE-R



LEE-M



LEE-UNF

Banjo Elbow & Tee - Fittings

DIN 2353 - ISO 8434-1



WH-R-KDS-O RING



WH-M-KDS-O RING



SWVE-R



SWVE-M



KDSWVE-R



KDSWVE-M



TH-R-KDS



TH-M-KDS



TH-R



TH-M

VE-LOCK PRODUCT RANGE

VE-LOCK

DIN 2353 TYPE -FERRULE FITTINGS

Non Adjustable Fittings

DIN 2353 - ISO 8434-1



WE -NPT



WE -M -KEG



WE-M



WE-R



WE-R-KEG



TE-M



TE-R



TE-R-KEG



LE-M



LE-R

Tube to Female Fittings

DIN 2353 - ISO 8434-1



GAI -R



GAI -M



GAI -BSPT



GAI -NPT



GAI-UNF

Port Reducer Fittings

DIN 2353 - ISO 8434-1



RI -ED



RI

Gauge Adaptor Fittings

DIN 2353 - ISO 8434-1



MAV



MAVE

Balking Plug Fittings

DIN 2353 - ISO 8434-1



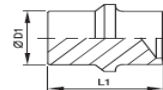
ROV



VSTI -R



VKA



BUZ



Hex Plug

VE-LOCK PRODUCT RANGE

DIN 2353 TYPE -FERRULE FITTINGS

VE-LOCK

Weld Fittings

DIN 2353 - ISO 8434-1

Weld adaptor -AS



Weld elbow -WAS



Bulkhead Weld coupling



Weld Nipple



Reducing wno

VE-LOCK - DIN 2353 - ISO 8434 - 1 - TYPE SINGLE FERRULE BITE TYPE TUBE FITTINGS

- 1) AVAILABLE IN CARBON STEEL (C.S.) & STAINLESS STEEL GRADE OF MATERIALS
- 2) ALL MODELS & SIZES ARE IN EX STOCK - READY STOCK WILL BE AVAILBLE
- 3) ALL ABOVE FITTINGS ARE TESTED 100 % IN HOUSE WITH HYDRO PRESSURE TEST /LEAK PROOF TEST CERTIFICATES
- 4) C.S. FERRULE RINGS ARE HARDENED AS PER TYPE TEST IS 10103 & IT IS 12 MONTHS WARRANTEE WITH LEAK PROOF
- 5) ALL ABOVE FITTINGS ARE MANUFACTURED AS PER DIN 2353 STANDARDS & DIMENSIONS ONLY
- 6) RUBBER PARTS ARE SUPPLIED FROM NBR MATERIALS & FOR VITON - PLS REQUEST
- 7) ALL TEST REPORTS WILL BE PROVIDED ON DEMAND LIKE
 - 7A) DIMENSIONAL TEST REPORTS FOR EACH MODELS
 - 7B) FINAL INSPECTION REPORTS FOR EACH MODELS
 - 7C) HYDRO PRESSURE TEST / LEAKAGE TEST REPORTS FOR EACH MODELS
 - 7D) ASSEMBLY & DISMANTALLING TEST REPORTS FOR EACH MODELS
- 8) ALL ABOVE C.S. FITTINGS ARE - ZINC PASSIVATED WITH YELLOW CHROMATIZED OR TRIVALENT ZINC PASSIVATED (CHROME FREE)
- 9) WELD NIPPLE FITTINGS ARE GIVEN IN BLACK PHOSPAHTISED ONLY
- 10) SWEIVEL CONNECTORS CAN BE GIVEN BY FERRULE BITE TYPE SWEIVEL OR THRUST WIRE SWEIVEL TYPE AS PER REQUIREMENTS
- 11) ALL ABOVE FITTINGS ARE SUPPLIED WITH ASSEMBLY (BODY + NUT + FERRULE RING) OR SEPERATELY AS PER REQUIREMENTS

FOR STAINLESS STEEL FITTINGS

- 1) FOR STAINLESS STEEL FITTINGS - WE USE NUT THREADS WITH SILVER PLATED TO AVOID ANTI GALLING EFFECTS
- 2) STAINLESS STEEL FITTINGS ARE AVAILABLE IN SS 304 GRADE AND SS 316 GRADE BOTH
- 3) FERRULE WILL BE MANUFACTURED FROM SS 304 / SS 303 / SS 316 GRADES ALSO
- 4) ALL FERRULES ARE ANNELEAD AT REQUIRED TEMP & AVAULABE IN BLACK COLOUR ONLY
- 5) ALL S.S. FITTINGS ARE SUITBALE FOR HIGH PRESSURE & HIGH TEMP. AS PER REQUIREMENTS GIVEN IN DIN 2353 TYPE

OUR BRAND MAKE IS ONLY - " VE " OR " VE-LOCK "

VAISHNAVI ENGINEERING | VAISHNAVI HYDRAULICS PVT. LTD.

127, PARAS INDUSTRIAL ESTATE, KANCHAPADA , MALAD WEST, MUMBAI -400064 , INDIA

TEL NOS - 91 22 28803236 / 91 22 28813867 - FAX NOS - 91 22 28445942

E MAIL ID - sales_velock@vehydraulics .com - CTC PERSON - MR. MEHUL PADIYA -CEO

WEBSITE - www.vehydraulics.com | www.tubeclampsfittings.com | www.flanges-valves.com