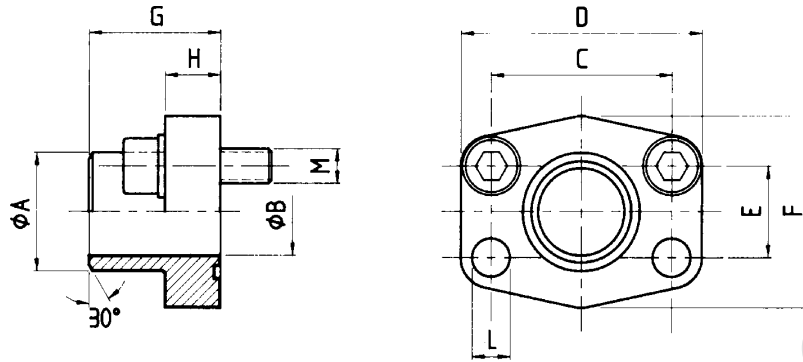




SAE-BUTT WELDED FLANGE



Material: 1 ST 44.3 (FE 430).....Carbon Steel
 2 1.4404 316L.....Stainless

3.000 Series													
Size	VE-LOCK® ITEM CODE	A	B	C	D	E	F	G	H	ØL	M (Screws)		Weight kg
											Metric	UNC	
1/2"	VEFL 177	21.6	13.0	38.10	54	17.48	46	36	16	9.0	M 8 x 30	5/16" x 1 1/4"	0.28
1/2"	VEFL 178	17.5	13.0	38.10	54	17.48	46	36	16	9.0	M 8 x 30	5/16" x 1 1/4"	0.25
3/4"	VEFL 179	28.0	19.0	47.63	65	22.23	50	36	18	11.0	M 10 x 35	3/8" x 1 1/2"	0.39
1"	VEFL 180	34.0	25.0	52.37	70	26.19	55	38	18	11.0	M 10 x 35	3/8" x 1 1/2"	0.46
1 1/4"	VEFL 181	42.8	32.0	58.72	79	30.18	68	41	21	11.5	M 10 x 40	7/16" x 1 1/2"	0.66
1 1/2"	VEFL 182	48.6	38.0	69.85	93	35.71	78	44	25	13.5	M 12 x 45	1/2" x 1 3/4"	1.05
2"	VEFL 183	61.0	51.0	77.77	102	42.88	90	45	25	13.5	M 12 x 45	1/2" x 1 3/4"	1.19
2 1/2"	VEFL 184	77.0	63.0	88.90	114	50.80	105	50	25	13.5	M 12 x 45	1/2" x 1 3/4"	1.40
3"	VEFL 185	92.0	73.0	106.38	134	61.93	124	50	27	17.5	M 16 x 50	5/8" x 2"	2.15
3 1/2"	VEFL 186	103.0	89.0	120.65	152	69.85	136	48	27	17.5	M 16 x 50	5/8" x 2"	2.40
4"	VEFL 187	115.5	99.0	130.18	162	77.77	146	48	27	17.5	M 16 x 50	5/8" x 2"	2.85
5"	VEFL 188	140.2	120.0	152.40	184	92.08	180	50	28	17.5	M 16 x 55	5/8" x 2"	5.20
6.000 Series													
1/2"	VEFL 189	21.5	13.0	40.49	54	18.24	46	36	16	9.0	M 8 x 30	5/16" x 1 1/4"	0.29
1/2"	VEFL 190	17.5	13.0	40.49	54	18.24	46	36	16	9.0	M 8 x 30	5/16" x 1 1/4"	0.26
3/4"	VEFL 191	28.0	19.0	50.80	71	23.80	55	35	21	11.0	M 10 x 35	3/8" x 1 1/2"	0.50
1"	VEFL 192	34.0	25.0	57.15	79	27.76	68	41	21	13.0	M 12 x 45	7/16" x 1 3/4"	0.76
1 1/4"	VEFL 193	42.8	32.0	66.68	93	31.75	78	44	25	15.0*	M 14 x 45	1/2" x 1 3/4"	1.20
1 1/4"	VEFL 194	42.8	29.0	66.68	93	31.75	78	44	25	15.0*	M 14 x 45	1/2" x 1 3/4"	1.35
1 1/2"	VEFL 195	48.6	38.0	79.38	112	36.50	94	55	30	17.0	M 16 x 50	5/8" x 2"	1.65
1 1/2"	VEFL 196	48.6	34.0	79.38	112	36.50	94	55	30	17.0	M 16 x 50	5/8" x 2"	1.80
2"	VEFL 197	61.0	51.0	96.82	134	44.45	114	65	37	21.0	M 20 x 65	3/4" x 2 1/2"	2.45
2"	VEFL 198	61.0	43.0	96.82	134	44.45	114	65	37	21.0	M 20 x 65	3/4" x 2 1/2"	2.70
2 1/2"	VEFL 199	76.1	51.0	123.80	180	58.70	152	80	45	26.0	M 24 x 75	-	6.40
2 1/2"	VEFL 200	90.0	60.5	123.80	180	58.70	152	80	45	26.0	M 24 x 75	-	8.30