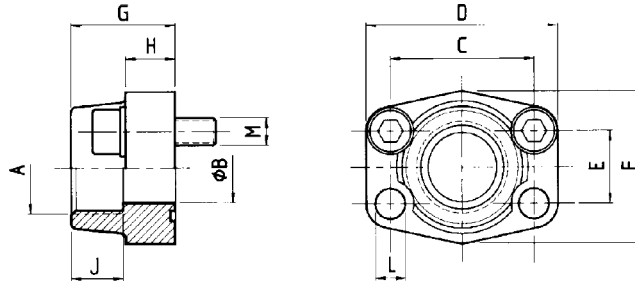




VE-LOCK

# SAE-BSP THREADED FLANGE



Material: 1 ST 44.3 (FE 430) .....Carbon Steel  
 2. 1.4404 316L .....Stainless Steel



3000 Series														
Size	VE-LOCK® ITEM CODE	A	B	C	D	E	F	G	H	J	ØL	M (Screws)		Weight kg
												Metric	UNC	
1/2"	VEFL 80	R 1/2"	13	38.10	54	17.48	46	36	16	19	9.0	M 8 x 30	5/16" x 1 1/4"	0.25
1/2"	VEFL 81	R 3/8"	13	38.10	54	17.48	46	36	16	19	9.0	M 8 x 30	5/16" x 1 1/4"	0.28
3/4"	VEFL 82	R 3/4"	19	47.63	65	22.23	50	36	18	19	11.0	M 10 x 35	3/8" x 1 1/2"	0.39
3/4"	VEFL 83	R 1/2"	13	47.63	65	22.23	50	36	18	19	11.0	M 10 x 35	3/8" x 1 1/2"	0.42
1"	VEFL 84	R 1"	25	52.37	70	26.19	55	38	18	22	11.0	M 10 x 35	3/8" x 1 1/2"	0.46
1"	VEFL 85	R 3/4"	19	52.37	70	26.19	55	35	21	19	11.0	M 10 x 35	3/8" x 1 1/2"	0.49
1"	VEFL 86	R 1/2"	13	52.37	70	26.16	55	38	18	22	11.0	M 10 x 35	3/8" x 1 1/2"	0.52
1 1/4"	VEFL 87	R 1 1/4"	32	58.72	79	30.18	68	41	21	22	11.5	M 10 x 40	7/16" x 1 1/2"	0.66
1 1/4"	VEFL 88	R 1 1/4"	32	58.72	79	30.18	68	41	21	22	13.0	M 12 x 40	-	0.66
1 1/4"	VEFL 89	R 1"	25	58.72	81	30.18	65	42	25	22	11.5	M 10 x 40	7/16" x 1 3/4"	0.75
1 1/4"	VEFL 90	R 1"	25	58.72	81	30.18	65	42	25	22	13.0	M 12 x 40	-	0.75
1 1/4"	VEFL 91	R 3/4"	19	58.72	79	30.18	68	41	21	22	11.5	M 10 x 40	7/16" x 1 1/2"	0.79
1 1/2"	VEFL 92	R 1 1/2"	38	69.85	93	35.71	78	45	25	24	13.5	M 12 x 45	1/2" x 1 3/4"	1.05
1 1/2"	VEFL 93	R 1 1/4"	32	69.85	95	35.71	78	45	27	24	13.5	M 12 x 45	1/2" x 1 3/4"	1.10
1 1/2"	VEFL 94	R 1"	25	69.85	93	35.71	78	45	25	24	13.5	M 12 x 45	1/2" x 1 3/4"	1.16
1 1/2"	VEFL 95	R 3/4"	19	69.85	93	35.71	78	45	25	24	13.5	M 12 x 45	1/2" x 1 3/4"	1.23
2"	VEFL 96	R 2"	51	77.77	102	42.88	90	45	25	30	13.5	M 12 x 45	1/2" x 1 3/4"	1.19
2"	VEFL 97	R 1 1/2"	38	77.77	102	42.88	90	45	25	26	13.5	M 12 x 45	1/2" x 1 3/4"	1.25
2"	VEFL 98	R 1 1/4"	32	77.77	102	42.88	90	45	25	24	13.5	M 12 x 45	1/2" x 1 3/4"	1.40
2"	VEFL 99	R 1"	25	77.77	102	42.88	90	45	25	26	13.5	M 12 x 45	1/2" x 1 3/4"	1.44
2 1/2"	VEFL 100	R 2 1/2"	63	88.90	114	50.80	105	50	25	30	13.5	M 12 x 45	1/2" x 1 3/4"	1.40
2 1/2"	VEFL 101	R 2"	51	88.90	114	50.80	105	50	25	30	13.5	M 12 x 45	1/2" x 1 3/4"	1.45
3"	VEFL 102	R 3"	73	106.38	134	61.93	124	50	27	34	17.5	M 16 x 50	5/8" x 2"	2.15
3"	VEFL 103	R 2 1/2"	63	106.38	134	61.93	124	50	27	30	17.5	M 16 x 50	5/8" x 2"	2.25
3 1/2"	VEFL 104	R 3 1/2"	89	120.65	152	69.85	136	48	27	34	17.5	M 16 x 50	5/8" x 2"	2.40
3 1/2"	VEFL 105	R 3"	73	120.65	152	69.85	136	48	27	34	17.5	M 16 x 50	5/8" x 2"	2.50
4"	VEFL 106	R 4"	99	130.18	162	77.77	146	48	27	34	17.5	M 16 x 50	5/8" x 2"	2.85
4"	VEFL 107	R 3 1/2"	89	130.18	162	77.77	146	48	27	34	17.5	M 16 x 50	5/8" x 2"	3.00