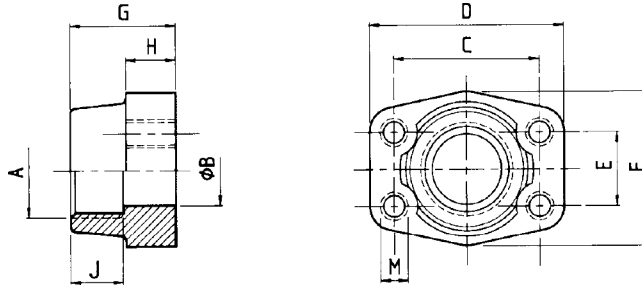




VE-LOCK

SAE-PIPE THREADED COMPANION FLANGE



Material: 1 ST 44.3 (FE 430)Carbon Steel
 2. 1.4404 316LStainless Steel



3.000 Series													
Size	VE-LOCK® ITEM CODE	A	B	C	D	E	F	G	H	J	M(Screws)		Weight kg
											Metric	UNC	
1/2"	VEFL 336	R 1/2"	13	38.10	54	17.48	46	36	16	19	M 8	5/16"	0.25
1/2"	VEFL 337	R 3/8"	13	38.10	54	17.48	46	36	16	19	M 8	5/16"	0.28
3/4"	VEFL 338	R 3/4"	19	47.63	65	22.23	50	36	18	19	M 10	3/8"	0.39
3/4"	VEFL 339	R 1/2"	13	47.63	65	22.23	50	36	18	19	M 10	3/8"	0.42
1"	VEFL 340	R 1"	25	52.37	70	26.19	55	38	18	22	M 10	3/8"	0.46
1"	VEFL 341	R 3/4"	19	52.37	70	26.19	55	35	21	19	M 10	3/8"	0.49
1 1/4"	VEFL 342	R 1 1/4"	32	58.72	79	30.18	68	41	21	22	M 10	7/16"	0.66
1 1/4"	VEFL 343	R 1"	25	58.72	81	30.18	65	42	25	22	M 10	7/16"	0.75
1 1/2"	VEFL 344	R 1 1/2"	38	69.85	93	35.71	78	45	25	24	M 12	1/2"	1.05
1 1/2"	VEFL 345	R 1 1/4"	32	69.85	95	35.71	78	45	27	24	M 12	1/2"	1.10
2"	VEFL 346	R 2"	51	77.77	102	42.88	90	45	25	30	M 12	1/2"	1.19
2"	VEFL 347	R 1 1/2"	38	77.77	102	42.88	90	45	25	26	M 12	1/2"	1.25
2 1/2"	VEFL 348	R 2 1/2"	63	88.90	114	50.80	105	50	25	30	M 12	1/2"	1.40
2 1/2"	VEFL 349	R 2"	51	88.90	114	50.80	105	50	25	30	M 12	1/2"	1.45
3"	VEFL 350	R 3"	73	106.38	134	61.93	124	50	27	34	M 16	5/8"	2.15
3"	VEFL 351	R 2 1/2"	63	106.38	134	61.93	124	50	27	30	M 16	5/8"	2.25
3 1/2"	VEFL 352	R 3 1/2"	89	120.65	152	69.85	136	48	27	34	M 16	5/8"	2.40
3 1/2"	VEFL 353	R 3"	73	120.65	152	69.85	136	48	27	34	M 16	5/8"	2.50
4"	VEFL 354	R 3"	99	130.18	162	77.77	146	48	27	34	M 16	5/8"	2.85
4"	VEFL 355	R 3 1/2"	89	130.18	162	77.77	146	48	27	34	M 16	5/8"	3.00
6.000 Series													
1/2"	VEFL 356	R 1/2"	13	40.49	54	18.24	46	36	16	19	M 8	5/16"	0.26
1/2"	VEFL 357	R 3/8"	13	40.49	54	18.24	46	36	16	19	M 8	5/16"	0.29
3/4"	VEFL 358	R 3/4"	19	50.80	71	23.80	55	35	21	22	M 10	3/8"	0.50
3/4"	VEFL 359	R 1/2"	13	50.80	71	23.80	55	35	21	22	M 10	3/8"	0.55
1"	VEFL 360	R 1"	25	57.16	81	27.76	65	42	25	24	M 12	7/16"	0.76
1"	VEFL 361	R 3/4"	19	57.16	81	27.76	65	42	25	24	M 12	7/16"	0.80
1 1/4"	VEFL 362	R 1 1/4"	32	66.68	95	31.75	78	45	27	25	M 14	1/2"	1.20
1 1/4"	VEFL 363	R 1"	25	66.68	95	31.75	78	45	27	25	M 14	1/2"	1.30
1 1/2"	VEFL 364	R 1 1/2"	38	79.38	112	36.50	94	50	30	28	M 16	5/8"	1.65
1 1/2"	VEFL 365	R 1 1/4"	32	79.38	112	36.50	94	50	30	28	M 16	5/8"	1.75
2"	VEFL 366	R 2"	51	96.82	134	44.45	114	65	37	30	M 20	3/4"	2.45
2"	VEFL 367	R 1 1/2"	38	96.82	134	44.45	114	65	37	30	M 20	3/4"	2.55