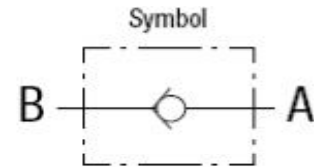
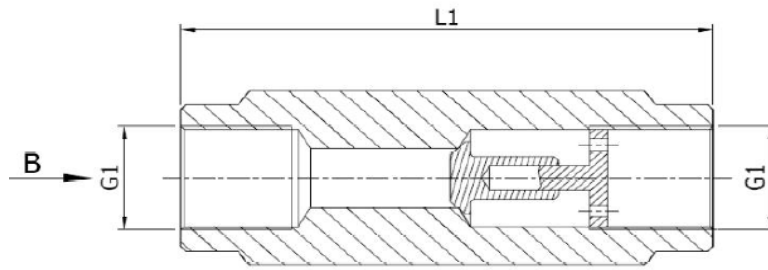
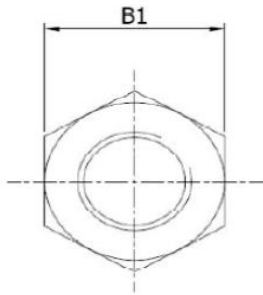


CHECK VALVE (NON RETURN VALVE)



FEMALE X FEMALE THREADS - BSP / NPT



VE-LOCK PART CODE	Nominal Size = DN	G1	Pn (Bar)	L1	B1	WT (GMS)	Cracking Pressure in Bar
		BSP/NPT					
VE NRV 1/8	6	G 1/8	500	45	16	100	0.5 to 1 Bar
VE NRV 1/4	8	G 1/4	500	55	25	200	0.5 to 1 Bar
VE NRV 3/8	10	G 3/8	500	65	30	400	0.5 to 1 Bar
VE NRV 1/2	12	G 1/2	500	73	35	700	0.5 to 1 Bar
VE NRV 3/4	16	G 3/4	500	88	45	1200	0.5 to 1 Bar
VE NRV 1	20	G 1	500	127	50	2000	0.5 to 1 Bar
VE NRV 1 1/4	25	G 1 1/4	500	143	60	3300	0.5 to 1 Bar
VE NRV 1 1/2	30	G 1 1/2	315	143	70	4200	0.5 to 1 Bar
VE NRV 2	40	G 2	315	165	90	7200	0.5 to 1 Bar

Purpose:

Hydraulic oil, not easily inflammable hydraulic fluids
 (but not HFD group; seals made of FPM are necessary)
 compressed air (please indicate with order).
 Not useable for steam, oxygen or combustible/explosive
 gases.
 corrosion inducing media. For use with water, please
 indicate kind of water and any additives.

Material:

Steel zinc - plated (A3C), seals of NBR (Perbunan).
 On request of FPM (Viton).
 Stainless steel (71), seals of FPM (Viton).

Opening pressure:

Approx. 1 bar (on request also 0.5 - 2 and 3 bar are
 available. Please specify for order). For pressure see
 appropriate tables. Tolerance of opening pressure:
 20%.