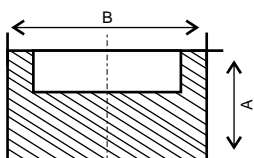




Caps - black - 3000 lbs / 6000 lbs



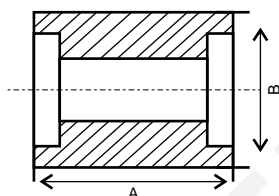
Nom dlam. inch	3000Lbs				theor. weight kg/ea	6000Lbs				theor. weight kg/ea
	A mm	inch	B mm	inch		A mm	inch	B mm	inch	
1/2"	17,5	11/16"	31	1.7/32"	0.065					
3/4"	22,5	7/8"	36	1.27/64"	0.125					
1"	25	63/64"	45	1.25/32"	0.210	28	1.7/64"	50	1,3132"	0.340
1.1/4"	26	1.1/32"	55	2.11/64"	0.370					
1.1/2"	28	1.7/64"	60	2.23/64"	0.600	33	1.19/64"	65	2.9/16"	0.800
2"	34	1.11/32"	75	2.61/64"	1.03					

VL Code 763

Dimensions and Weight

Forged carbon steel fittings to ASME B 16.11, or BS 3799, or MSS SP - 79 and 83, material to ASTM A 105/SA 105N and NACE MR - 01 - 75; C=max. 0.23% and C- eq. max. 0.43% (long formula). If desired with inspection report as per EN 10204 /3.1B

Couplings - black



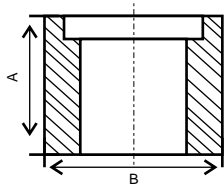
Nom dlam. inch	3000Lbs				theor. weight kg/ea	6000Lbs				theor. weight kg/ea
	A mm	inch	B mm	inch		A mm	inch	B mm	inch	
1/4"	25,5	1"	21	53/64"	0.055					
3/8"	25,5	1"	25	63/64"	0.062					
1/2"	28,5	1.1/8"	31	1.7/32"	0.110	28,5	1.1/8"	33	1.12/64"	0.140
3/4"	35,5	1.3/8"	36	1.27/64"	0.170	35,5	1.3/8"	40	1.37/64"	0.250
1"	39	1.1/2"	45	1.25/32"	0.270	39	1.1/2"	50	1.31/32"	0.360
1.1/4"	39	1.1/2"	55	2.11/64"	0.350					
1.1/2"	39	1.1/2"	60	2.23/64"	0.425	39	1.1/2"	65	2.9/16"	0.570
2"	51	2"	75	2.61/64"	0.715	51	2"	82	2.15/64"	1.20
2.1/2"	51	2"		3.35/64"	1.13					
3"	51	2"	108	4.1/4"	1.50					
4"	60	2.11/32"	135	5.5/16"	2.50					

VL Code 763

Dimensions and Weight

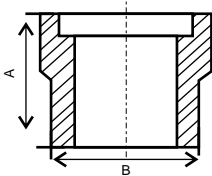
Forged carbon steel fittings to ASME B 16.11, or BS 3799, or MSS SP - 79 and 83, material to ASTM A 105/SA 105N and NACE MR - 01 - 75; C=max. 0.23% and C- eq. max. 0.43% (long formula). If desired with inspection report as per EN 10204 /3.1B

Half couplings - black



Nom dlam. inch	3000Lbs				theor. weight kg/ea	6000Lbs				theor. weight kg/ea
	A mm	inch	B mm	inch		A mm	inch	B mm	inch	
1 /4"	25, 5	1"	21	53 /64"	0.057					
3 /8"	27	1.1 /16"	25	63 /64"	0.075					
1 /2"	32	1.1 /4"	31	1.7 /32"	0.137	32	1.1 /4"	33	1.19 /64"	0.190
3 /4"	37	1.7 /16"	36	1.27 /64"	0.200	37	1.7 /16"	40	1.37 /64"	0.285
1"	41, 5	1.5 /8"	45	1.25 /32"	0.335	41, 5	1.5 /8"	50	1.31 /32"	0.470
1.1 /2"	45	1.3 /4"	60	2.23 /64"	0.570	45	1.3 /4"	65	2.9 /16"	0.800
2"	57, 5	2.1 /4"	75	2.61 /64"	1.00	57, 5	2.1 /4"	82	3.15 /64"	1.57
3"	60, 5	2.3 /8"	108	4.1 /4	2.13					

Reducing inserts- black - 3000 Lbs



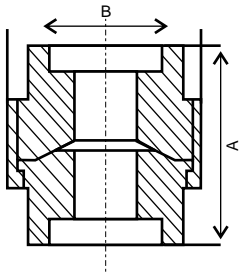
Nom dlam. inch	3000 Lbs				theor. weight kg/ea
	A mm	inch	B mm	inch	
1 /2" x 1 /4"	25	63 /64"	21,6	.850"	0.050
1 /2" x 3 /8"	33, 5	1.5 /16"	21,6	.850"	0.070
3 /4" x 1 /2"	35, 5	1.7 /16"	26,9	1.060"	0.125
1" x 1 /2"	33, 5	1.5 /16"	33,6	1.325"	0.175
1" x 3 /4"	41, 5	1.41 /64"	33,6	1.325"	0.190
1.1 /2" x 1 /2"	35, 5	1.25 /64"	48,5	1.910"	0.380
1.1 /2" x 3 /4"	35	1.3 /8"	48,5	1.910"	0.350
1.1 /2" x 1"	36, 5	1.7 /16"	48,5	1.910"	0.350
2" x 1 /2"	38	1.1 /2"	60,3	2.375"	0.600
2" x 1 /2"	39, 6	1.56"	60,3	2.375"	0.650
2" x 1"	38	1.1 /2"	60,3	2.375"	0.600
2" x 1.1 /2"	40	1.37 /64"	60,3	2.375"	0.480

VL Code 763

Dimensions and Weight

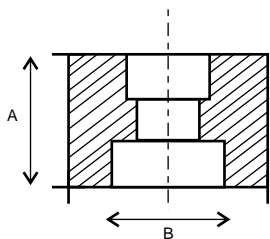
Forged carbon steel fittings to ASME B 16.11, or BS 3799, or MSS SP - 79 and 83, material to ASTM A 105/SA 105N and NACE MR - 01 - 75; C=max. 0.23% and C- eq. max. 0.43% (long formula). If desired with inspection report as per EN 10204 /3.1B

Unions F.F. - black



Nom dlam. inch	3000Lbs				theor. weight kg/ea	6000Lbs				theor. weight kg/ea
	A mm	A inch	B mm	B inch		A mm	A inch	B mm	B inch	
1/4"	45	1.3/4"	32	1.1/4"	0.150					
3/8"	51	2"	38	1.1/2"	0.220					
1/2"	54	2.1/8"	46	1.13/16"	0.380	69	2.22/32"	60	2.11/32"	0.910
3/4"	57	2.1/4"	51	2"	0.460	72	2.27/32"	72	2.27/32"	1.80
1"	64	2.33/64"	60	2.11/32"	0.700	80	3.5/32"	80	3.5/32"	2.00
1.1/4"	74	2.29/32"	72	2.27/32"	1.200					
1.1/2"	80	3.5/32"	80	3.5/32"	1.500					
2"	89	3.1/2"	94	3.45/54"	2.575					
3"	130	5.1/8"	144	5.43/64"	8.745					

Reducing couplings - black- 3000Lbs



Nom dlam. inch	3000 Lbs				theor. weight kg/ea
	A mm	A inch	B mm	B inch	
1/2" x 1/4"	28.5	1.1/8"	31	1.7/32"	0.130
1/2" x 3/8"	28.5	1.1/8"	31	1.7/32"	0.120
3/4" x 1/4"	35.5	1.3/8"	36	1.27/64"	0.220
3/4" x 3/8"	35.5	1.3/8"	36	1.27/64"	0.210
3/4" x 1/2"	35.5	1.3/8"	36	1.27/64"	0.195
1" x 1/4"	39	1.1/2"	45	1.25/32"	0.380
1" x 1/2"	39	1.1/2"	45	1.25/32"	0.350
1" x 3/4"	39	1.1/2"	45	1.25/32"	0.315
1.1/4" x 3/4"	39	1.1/2"	55	2.11/64"	0.465
1.1/4" x 1"	39	1.1/2"	55	2.11/64"	0.435
1.1/2" x 1/2"	39	1.1/2"	60	2.23/64"	0.670
1.1/2" x 3/4"	39	1.1/2"	60	2.22/64"	0.630
1.1/2" x 1"	39	1.1/2"	60	2.23/64"	0.580
2" x 3/4"	51	2.1/64"	75	2.61/64"	1.27
2" x 1"	51	2.1/64"	75	2.61/64"	1.14
2" x 1.1/2"	51	2.1/64"	75	2.61/64"	0.920

VL Code 763

Dimensions and Weight

Forged carbon steel fittings to ASME B 16.11, or BS 3799, or MSS SP - 79 and 83, material to ASTM A 105/SA 105N and NACE MR - 01 - 75; C=max. 0.23% and C- eq. max. 0.43% (long formula). If desired with inspection report as per EN 10204 /3.1B

Elbows 45° - black

Nom dlam. inch	3000Lbs					theor. weight kg/ea	6000Lbs					theor. weight kg/ea
	A		B		A		B					
mm	inch	mm	inch	mm	inch	mm	inch	mm	inch	mm	inch	
1/2"	22.5	7/8"	34	1.11/32"	0.170							
3/4"	25.5	1"	38.5	1.1/2"	0.227	28.5	1.1/8"	46.5	1.53/64"	0.595		
1"	28.5	1.1/8"	46.5	1.53/64"	0.397	33.5	2.5/16"	56.5	2.7/32"	0.880		
1.1/4"	33.5	1.5/16"	56.5	2.7/32"	0.567							
1.1/2"	38	1.1/2"	62.5	2.29/64"	0.737	41.5	1.5/8"	76	3"	1.85		
2"	41.5	1.5/8"	76	3"	1.22	50.5	2"	92	3.5/8"	2.93		

Elbows 90° - black

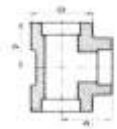
Nom dlam. inch	3000Lbs					theor. weight kg/ea	6000Lbs					theor. weight kg/ea
	A		B		A		B					
mm	inch	mm	inch	mm	inch	mm	inch	mm	inch	mm	inch	
1/4"	20.5	13/16"	22	7/8"	0.057							
3/8"	24.5	31/32"	26.5	1.3/64"	0.113							
1/2"	28.5	1.1/8"	34	1.1/32"	0.227	28.5	1.1/2"	34	1.11/32"	0.225		
3/4"	33.5	1.5/16"	38.5	1.1/2"	0.312	38	1.1/2"	46.5	1.53/64"	0.625		
1"	38	1.1/2"	46.5	1.53/64"	0.596	44.5	1.3/4"	56.5	2.7/32"	1.021		
1.1/4"	44.5	1.3/4"	56.5	2.7/32"	0.709							
1.1/2"	51	2"	62.5	2.29/64"	0.851	60.5	2.3/8"	76	3"	2.381		
2"	60.5	2.3/8"	76	3"	1.474							
2.1/2"	63.5	2.1/2"	92	3.5/8"	2.665							
3"	82.5	3.1/4"	110	4.21/64"	4.649							

VL Code 763

Dimensions and Weight

Forged carbon steel fittings to ASME B 16.11, or BS 3799, or MSS SP - 79 and 83, material to ASTM A 105/SA 105N and NACE MR - 01 - 75; C=max. 0.23% and C- eq. max. 0.43% (long formula). If desired with inspection report as per EN 10204 /3.1B

Tees (Straight) - black

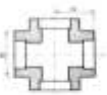


Nom dlam. inch	3000Lbs					theor. weight kg/ea	6000Lbs					theor. weight kg/ea
	A		B				A		B			
mm	inch	mm	inch	inch	mm	inch	mm	inch	mm	inch		
1/4"	20.5	13/16"	22	7/8"	0.100							
3/8"	24.5	31/32"	26.5	1.3/64"	0.155							
1/2"	28.5	1.1/8"	34	1.11/32"	0.280	28.5	1.1/8"	34	1.11/32"	0.310		
3/4"	33.5	1.5/16"	38.5	1.1/2"	0.370	38	1.1/2"	46.5	1.3/64"	0.860		
1"	38	1.1/2"	46.5	1.53/64"	0.565	44.5	1.3/4"	56.5	2.7/32"	1.45		
1.1/4"	44.5	1.3/4"	56.5	2.7/32"	0.870	60.5	2.3/8"	76	3"	2.03		
1.1/2"	51	2"	62.5	2.29/64"	1.28							
2"	60.5	2.3/8"	76	3"	1.79	63.5	2.1/2"	92	3.5/8"	4.43		
2.1/2"	63.5	2.1/2"	92	3.5/8"	2.84							
3"	82.5	3.1/4"	110	4.21/64"	5.50							
4"	114.5	4.1/2"	125	5.63/64"	20.0							

Tees (Reducing) - black -3000Lbs



Nom dlam. inch	3000 Lbs					theor. weight kg/ea
	A		B			
mm	inch	mm	inch	inch	mm	
1/2" x 1/4"	28.5	1.1/8"	34	1.11/32"	0.280	
3/4" x 1/2"	33.5	1.5/16"	38.5	1.1/2"	0.370	
1" x 1/2"	38	1.1/2"	46.5	1.53/64"	0.565	
1" x 3/4"	38	1.1/2"	46.5	1.53/64"	0.565	
1.1/2" x 1/2"	51	2"	62.5	2.29/64"	1.28	
1.1/2" x 3/4"	51	2"	62.5	2.29/64"	1.28	
1.1/2" x 1"	51	2"	62.5	2.29/64"	1.28	
2" x 1/2"	60.5	2.3/8"	76	3"	1.81	
2" x 3/4"	60.5	2.3/8"	76	3"	1.81	
2" x 1"	60.5	2.3/8"	76	3"	1.81	
2" x 1.1/2"	60.5	2.3/8"	76	3"	1.81	



Nom dlam. inch	3000 Lbs					theor. weight kg/ea
	A		B			
mm	inch	mm	inch	inch	mm	
1"	38	1.1/2"	46.5	1.53/64"	0.750	
2"	60.5	2.3/8"	76	3"	1.82	