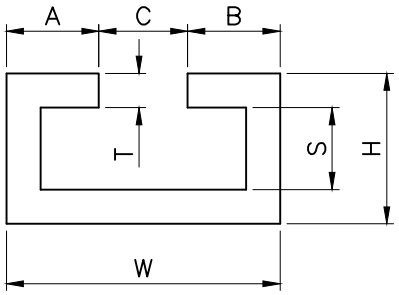
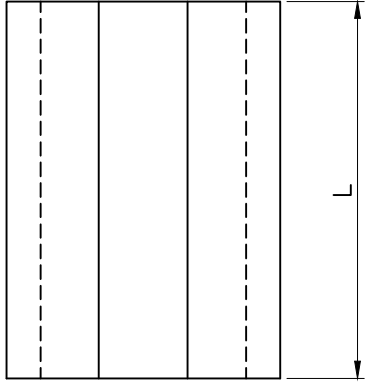


1 2 3 4 5 6 7 8 9 10 11 12
 IF IN DOUBT ASK TO DESIGN DEPT DO NOT SCALE THE DRAWING UNLESS OTHERWISE STATED REMOVES ALL BURRS AND SHARP CORNERS ALL DIMENSIONS ARE IN MM, PREFER SURFACE ROUGHNESS ∇ , IF NOT SPECIFIED

INDEX	ZONE	DETAILS OF CHANGES	APPROVED	DATE

LIGHT DUTY RAIL CHANNEL 1.6mm THICKNESS



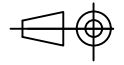
<u>TS11</u>	<u>TS14</u>	<u>TS30</u>
A = 8.0	A = 8.0	A = 8.0
B = 8.0	B = 8.0	B = 8.0
C = 11.0	C = 11.0	C = 11.0
W = 27.0	W = 27.0	W = 27.0
H = 11.0	H = 14.0	H = 30.0
T = 1.6 THICK	T = 1.6 THICK	T = 1.6 THICK
S = 8	S = 8.0	S = 27.0
L = 1 MITER LONG	L = 1 MITER LONG	L = 1 MITER LONG

VAISHNAVI ENGINEERING

Item Name : LIGHT DUTY RAIL CHANNEL (1.6MM THICK)

NAME	DATE	INDEX	0
Prepared By	ASHRAF	25/02/2012	Scale 1/1
Approved By			Sheet 1/1

Item Code : 1.6mm THICK Drwg. No. DWG- 825



Website : <http://www.vehydraulics.com> , Email : sales_velock@vehydraulics.com

This drawing is the property of Vaishnavi Engineering
 No part of this drawing should be copied or reproduced without written approval from Vaishnavi Engineering