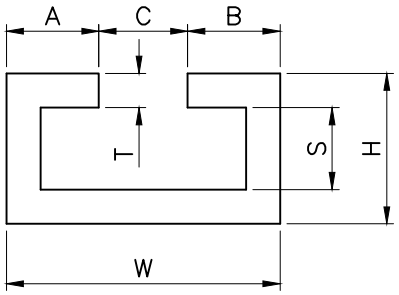
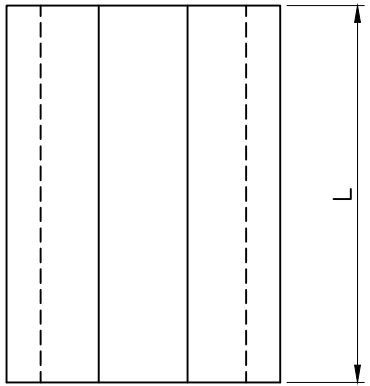


1 2 3 4 5 6 7 8 9 10 11 12
 IF IN DOUBT ASK TO DESIGN DEPT DO NOT SCALE THE DRAWING UNLESS OTHERWISE STATED REMOVES ALL BURRS AND SHARP CORNERS ALL DIMENSIONS ARE IN MM, PREFER SURFACE ROUGHNESS ∇ , IF NOT SPECIFIED

INDEX	ZONE	DETAILS OF CHANGES	APPROVED	DATE

LIGHT DUTY RAIL CHANNEL 2mm THICKNESS



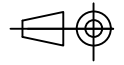
<u>TS11</u>	<u>TS14</u>	<u>TS30</u>
A = 8.5	A = 8.5	A = 8.5
B = 8.5	B = 8.5	B = 8.5
C = 11.0	C = 11.0	C = 11.0
W = 28.0	W = 28.0	W = 28.0
H = 11.0	H = 14.0	H = 30.0
T = 2.0 THICK	T = 2.0 THICK	T = 2.0 THICK
S = 7	S = 10.0	S = 26.0
L = 1 MITER LONG	L = 1 MITER LONG	L = 1 MITER LONG

VAISHNAVI ENGINEERING

Item Name : LIGHT DUTY RAIL CHANNEL (2mm THICK)

NAME	DATE	INDEX	0
Prepared By	ASHRAF	25/02/2012	Scale 1/1
Approved By			Sheet 1/1

Item Code : 2mm THICK Drwg. No. DWG- 824



Website : <http://www.vehydraulics.com> , Email : sales_velock@vehydraulics.com

This drawing is the property of Vaishnavi Engineering
 No part of this drawing should be copied or reproduced without written approval from Vaishnavi Engineering