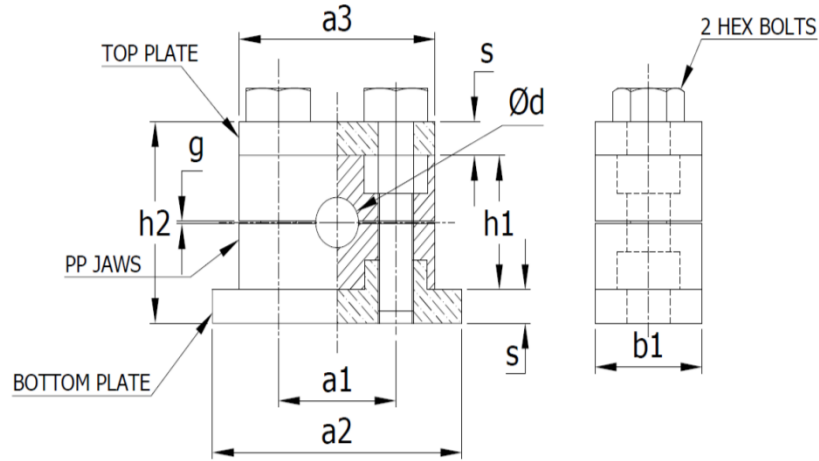


PIPE CLAMP - HEAVY SERIES - DIN 3015 -PART -2 -ALUMINIUM TYPE



ONE SET = ONE TOP PLATE + ONE BOTTOM PLATE + 2 HEX BOLTS (8.8 grade) + ONE PAIR OF ALUMINIUM JAWS

DIN GROUP	OUR PART CODE	PIPE OD Dia = d	a3	a1	h1	h2	g	b1	a2	S	BOLT SIZE
	Ve-Lock	in MM	in MM	in MM	in MM	in MM	in MM	in MM	in MM	in MM	Size X Length
1	ALPCH 6 MM	6	55	33	32	48 TO 49	0.6 TO 1 MM	30	72	8	M 10 x 45 MM
	ALPCH 6.4 MM	6.4									
	ALPCH 8 MM	8									
	ALPCH 9.5 MM	9.5									
	ALPCH 10 MM	10									
	ALPCH 12 MM	12									
	ALPCH 12.7 MM	12.7									
	ALPCH 13.5 MM	13.5									
	ALPCH 14 MM	14									
	ALPCH 15 MM	15									
	ALPCH 16 MM	16									
	ALPCH 17.2 MM	17.2									
2	ALPCH 19 MM	19	70	45	48	64	0.6 TO 1 MM	30	86	8	M 10 x 60 MM
	ALPCH 20 MM	20									
	ALPCH 21.3 MM	21.3									
	ALPCH 22 M	22									
	ALPCH 25 MM	25									
	ALPCH 26.9	26.9									
ALPCH 28 MM	28										

ONE SET = ONE TOP PLATE + ONE BOTTOM PLATE + 2 HEX BOLTS (8.8 GRADE) + ONE PAIR OF ALUMINIUM JAWS

DIN GROUP	OUR PART CODE	PIPE OD Dia = d	a3	a1	h1	h2	g	b1	a2	S	BOLT SIZE
	Ve-Lock	in MM	in MM	in MM	in MM	in MM	in MM	in MM	in MM	in MM	Size X Length
3	ALPCH 30 MM	30	85	60	60 TO 62	76 TO 78	0.6 TO 1 MM	30	100	8	M 10 x 70 MM
	ALPCH 32 MM	32									
	ALPCH 33.7 MM	33.7									
	ALPCH 35 MM	35									
	ALPCH 38 MM	38									
ALPCH 42 MM	42										
4	ALPCH 42 MM	42	115	90	89 TO 92	109 TO 112	2 MM	50	140	10	M 12 x 100 MM
	ALPCH 48.3 MM	48.3									
	ALPCH 50.8 MM	50.8									
	ALPCH 60.3 MM	60.3									
	ALPCH 63.5 MM	63.5									
ALPCH 65 MM	65										
5	ALPCH 70 MM	70	152	122	120 TO 122	137 TO 140	2 MM	65	180	10	M 16 x 130 MM
	ALPCH 73 MM	73									
	ALPCH 76.1 MM	76.1									
	ALPCH 88.9 MM	88.9									
6	ALPCH 102 MM	102	210	168	163 TO 168	193 TO 195	3 MM	80	230	16	M 20 x 180 MM
	ALPCH 114 MM	114.3									
	ALPCH 127 MM	127									
	ALPCH 133 MM	133									
7	ALPCH 140 MM	141	254	205	200	230 TO 232	3 MM	100	275	16	M 24 x 225 MM
	ALPCH 152 MM	152									
	ALPCH 168 MM	168									
8	ALPCH 177.8 MM	177.8	323	265	270	320	3 MM	130	345	25	M 30 x 300 MM
	ALPCH 193.7 MM	193.7									
	ALPCH 216 MM	216									
	ALPCH 219 MM	219									