

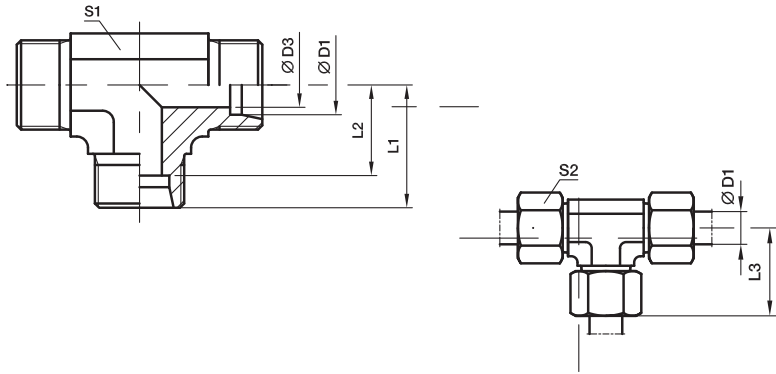
Properties

Design - As per DIN 2353 - ISO 8434 -1

Material - Steel / Stainless Steel /Brass

Surface Protection for Steel - Zinc passivation or Chrome -VI Free (Trivalent Plated)

Material - Stainless steel -304 / 316 Grade
Surface finish Mat Buff Surface Finish



Series	D1	D3	L1	L2	S1	L3	S2	Weight g/1 piece	DIN CODE Order code	VELOCK Order code	W.P. = IN BAR			
											CF	A3C	71	MS
LL	04	3	15	11	21	9	10	19	T04LL	VE T04LL	100	100	100	63
	06	4.5	15	9.5	21	9	12	20	T06LL	VE T06LL	100	100	100	63
	08	6	17	11.5	23	12	14	27	T08LL	VE T08LL	100	100	100	63
	10	8	18	12.5	24	12	17	39	T10LL	VE T10LL	100	100	100	63
	12	10	21	15	27	14	19	45	T12LL	VE T12LL	100	100	100	63
L	06	4	19	12	27	12	14	37	T06L	VE T06L	500	315	315	200
	08	6	21	14	29	12	17	53	T08L	VE T08L	500	315	315	200
	10	8	22	15	30	14	19	48	T10L	VE T10L	500	315	315	200
	12	10	24	17	32	17	22	65	T12L	VE T12L	400	315	315	200
	15	12	28	21	36	19	27	106	T15L	VE T15L	400	315	315	200
	18	15	31	23.5	40	24	32	179	T18L	VE T18L	400	315	315	200
	22	19	35	27.5	44	27	36	225	T22L	VE T22L	250	160	160	100
	28	24	38	30.5	47	36	41	396	T28L	VE T28L	250	160	160	100
	35	30	45	34.5	56	41	50	567	T35L	VE T35L	250	160	160	100
	42	36	51	40	63	50	60	905	T42L	VE T42L	250	160	160	100
S	06	4	23	16	31	12	17	68	T06S	VE T06S	800	630	630	400
	08	5	24	17	32	14	19	70	T08S	VE T08S	800	630	630	400
	10	7	25	17.5	34	17	22	91	T10S	VE T10S	800	630	630	400
	12	8	29	21.5	38	17	24	117	T12S	VE T12S	630	630	630	400
	14	10	30	22	40	19	27	136	T14S	VE T14S	630	630	630	400
	16	12	33	24.5	43	24	30	202	T16S	VE T16S	630	630	630	400
	20	16	37	26.5	48	27	36	289	T20S	VE T20S	420	400	400	250
	25	20	42	30	54	36	46	545	T25S	VE T25S	420	400	400	250
	30	25	49	35.5	62	41	50	758	T30S	VE T30S	420	400	400	250
	38	32	57	41	72	50	60	1264	T38S	VE T38S	420	315	315	200

* S1 - Dimensions may vary according to the forged body

Properties

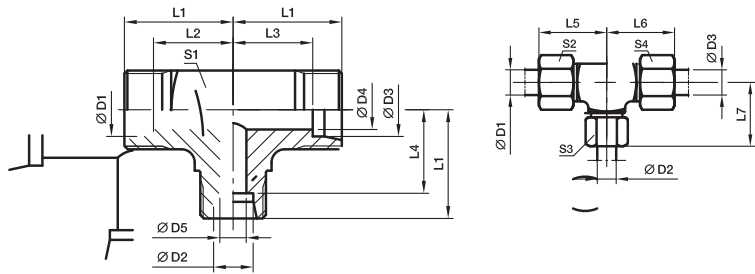
Design - As per DIN 2353 - ISO 8434 -1

Material - Steel / Stainless Steel /Brass

Surface Protection for Steel - Zinc passivation or Chrome -VI Free (Trivalent Plated)

Material - Stainless steel -304 / 316 Grade

Surface finish Mat Buff Surface Finish



Series	D1	D2	D3	D4	D5	L1	L2	L3	L4	L5	L6	L7	S1	S2	S3	S4	S5	Weight g/1 piece	DIN CODE Order code	VELOCK Order code	W.P. = IN BAR			
																					CF	A3C	71	MS
LL	04	08	04	3.0	6	17	13.0	13.0	11.5	23	23	23	12	10	14	10	12	27	TR04/08/04LL	VETR04/08/04LL	100	100	100	63
	06	04	06	4.5	3	15	9.5	9.5	11.0	21	21	21	11	12	10	12	9	18	TR06/04/06LL	VETR06/04/06LL	100	100	100	63
L	06	08	06	4.0	6	21	14.0	14.0	14.0	29	29	29	14	14	17	14	12	54	TR06/08/06L	VETR06/08/06L	500	315	315	200
	08	06	08	6.0	4	21	14.0	14.0	14.0	29	29	29	14	17	14	17	12	53	TR08/06/08L	VETR08/06/08L	500	315	315	200
	06	10	06	4.0	8	22	15.0	15.0	15.0	30	30	30	14	19	14	14	14	53	TR06/10/06L	VETR06/10/06L	500	315	315	200
	08	10	08	6.0	8	22	15.0	15.0	15.0	30	30	30	17	19	17	14	14	50	TR08/10/08L	VETR08/10/08L	500	315	315	200
	10	06	10	8.0	4	22	15.0	15.0	15.0	30	30	30	19	14	19	14	14	46	TR10/06/10L	VETR10/06/10L	500	315	315	200
	10	08	10	8.0	6	22	15.0	15.0	15.0	30	30	30	19	17	19	14	14	43	TR10/08/10L	VETR10/08/10L	500	315	315	200
	10	10	06	4.0	8	22	15.0	15.0	15.0	30	30	30	19	19	14	14	14	49	TR10/10/06L	VETR10/10/06L	500	315	315	200
	08	12	08	6.0	10	24	17.0	17.0	17.0	32	32	32	17	22	17	17	17	67	TR08/12/08L	VETR08/12/08L	400	315	315	200
	12	06	12	10.0	4	24	17.0	17.0	17.0	32	32	32	22	14	22	17	17	66	TR12/06/12L	VETR12/06/12L	400	315	315	200
	12	08	08	6.0	6	24	17.0	17.0	17.0	32	32	32	22	17	17	17	17	66	TR12/08/08L	VETR12/08/08L	400	315	315	200
	12	08	12	10.0	6	24	17.0	17.0	17.0	32	32	32	22	17	22	17	17	68	TR12/08/12L	VETR12/08/12L	400	315	315	200
	12	10	10	8.0	8	24	17.0	17.0	17.0	32	32	32	22	19	19	17	17	67	TR12/10/10L	VETR12/10/10L	400	315	315	200
	12	10	12	10.0	8	24	17.0	17.0	17.0	32	32	32	22	19	22	17	17	67	TR12/10/12L	VETR12/10/12L	400	315	315	200
	12	12	10	8.0	10	24	17.0	17.0	17.0	32	32	32	22	22	19	17	17	64	TR12/12/10L	VETR12/12/10L	400	315	315	200
	10	15	10	8.0	12	28	21.0	21.0	21.0	36	36	36	19	27	19	19	19	105	TR10/15/10L	VETR10/15/10L	400	315	315	200
	12	15	12	10.0	12	28	21.0	21.0	21.0	36	36	36	22	27	22	19	19	102	TR12/15/12L	VETR12/15/12L	400	315	315	200
	15	06	15	12.0	4	28	21.0	21.0	21.0	36	36	36	27	14	27	19	19	107	TR15/06/15L	VETR15/06/15L	400	315	315	200
	15	10	15	12.0	8	28	21.0	21.0	21.0	36	36	36	27	19	27	19	19	105	TR15/10/15L	VETR15/10/15L	400	315	315	200
	15	12	12	10.0	10	28	21.0	21.0	21.0	36	36	36	27	22	22	19	19	101	TR15/12/12L	VETR15/12/12L	400	315	315	200
	15	12	15	12.0	10	28	21.0	21.0	21.0	36	36	36	27	22	27	19	19	105	TR15/12/15L	VETR15/12/15L	400	315	315	200
	15	15	12	10.0	12	28	21.0	21.0	21.0	36	36	36	27	27	22	19	19	103	TR15/15/12L	VETR15/15/12L	400	315	315	200
	12	18	12	10.0	15	31	24.0	24.0	23.5	39	39	40	22	32	22	24	24	177	TR12/18/12L	VETR12/18/12L	400	315	315	200
	18	10	10	8.0	8	31	23.5	24.0	24.0	40	39	39	32	19	19	24	24	173	TR18/10/10L	VETR18/10/10L	400	315	315	200
	18	10	18	15.0	8	31	23.5	23.5	24.0	40	40	39	32	19	32	24	24	182	TR18/10/18L	VETR18/10/18L	400	315	315	200
	18	12	18	15.0	10	31	23.5	23.5	24.0	40	40	39	32	22	32	24	24	174	TR18/12/18L	VETR18/12/18L	400	315	315	200
	18	15	18	15.0	12	31	23.5	23.5	24.0	40	40	39	32	27	32	24	24	179	TR18/15/18L	VETR18/15/18L	400	315	315	200
	18	18	10	8.0	15	31	23.5	24.0	23.5	40	39	40	32	32	19	24	24	171	TR18/18/10L	VETR18/18/10L	400	315	315	200
	22	10	22	19.0	8	35	27.5	27.5	28.0	44	44	43	36	19	36	27	27	232	TR22/10/22L	VETR22/10/22L	250	160	160	100
	22	12	22	19.0	10	35	27.5	27.5	28.0	44	44	43	36	22	36	27	27	229	TR22/12/22L	VETR22/12/22L	250	160	160	100
	22	15	15	12.0	12	35	27.5	28.0	28.0	44	43	43	36	27	27	27	27	240	TR22/15/15L	VETR22/15/15L	250	160	160	100

* S1 - Dimensions may vary according to the forged body

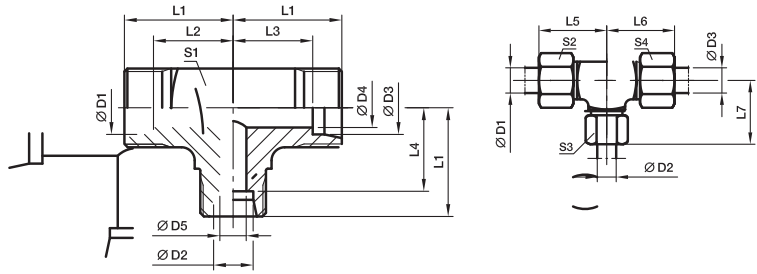
Properties

Design - As per DIN 2353 - ISO 8434 -1

Material - Steel / Stainless Steel /Brass

Surface Protection for Steel - Zinc passivation or Chrome -VI Free (Trivalent Plated)

Material - Stainless steel -304 / 316 Grade
Surface finish Mat Buff Surface Finish



Series	⊕	⊕	⊕	D4	D5	L1	L2	L3	L4	L5	L6	L7	S1	S2	S3	S4	S5	Weight g/1 piece	DIN CODE Order code	VELOCK Order code	W.P. = IN BAR			
	⊕	⊕	⊕	CF	A3C	71	MS																	
L	22	15	22	19.0	12	35	27.5	27.5	28.0	44	44	43	36	27	36	27	233	TR22/15/22L	VETR22/15/22L	250	160	160	100	
	22	18	18	15.0	15	35	27.5	27.5	27.5	44	44	44	36	32	32	27	236	TR22/18/18L	VETR22/18/18L	250	160	160	100	
	22	18	22	19.0	15	35	27.5	27.5	27.5	44	44	44	36	32	36	27	239	TR22/18/22L	VETR22/18/22L	250	160	160	100	
	22	22	18	15.0	19	35	27.5	27.5	27.5	44	44	44	36	36	32	27	228	TR22/22/18L	VETR22/22/18L	250	160	160	100	
	28	10	28	24.0	8	38	30.5	30.5	31.0	47	47	46	41	19	41	36	412	TR28/10/28L	VETR28/10/28L	250	160	160	100	
	28	12	28	24.0	10	38	30.5	30.5	31.0	47	47	46	41	22	41	36	408	TR28/12/28L	VETR28/12/28L	250	160	160	100	
	28	15	28	24.0	12	38	30.5	30.5	31.0	47	47	46	41	27	41	36	423	TR28/15/28L	VETR28/15/28L	250	160	160	100	
	28	18	28	24.0	15	38	30.5	30.5	30.5	47	47	47	41	32	41	36	421	TR28/18/28L	VETR28/18/28L	250	160	160	100	
	28	22	22	19.0	19	38	30.5	30.5	30.5	47	47	47	41	36	36	36	412	TR28/22/22L	VETR28/22/22L	250	160	160	100	
	28	22	28	24.0	19	38	30.5	30.5	30.5	47	47	47	41	36	41	36	415	TR28/22/28L	VETR28/22/28L	250	160	160	100	
S	10	06	10	7.0	4	25	17.5	17.5	18.0	34	34	33	22	17	22	17	103	TR10/06/10S	VETR10/06/10S	800	630	630	400	
	12	08	08	5.0	5	29	21.5	22.0	22.0	38	37	37	24	19	19	17	107	TR12/08/08S	VETR12/08/08S	630	630	630	400	
	12	08	12	8.0	5	29	21.5	21.5	22.0	38	38	37	24	19	24	17	105	TR12/08/12S	VETR12/08/12S	630	630	630	400	
	12	10	12	8.0	7	29	21.5	21.5	21.5	38	38	38	24	22	24	17	114	TR12/10/12S	VETR12/10/12S	630	630	630	400	
	12	16	12	8.0	12	33	25.5	25.5	24.5	42	42	43	24	30	24	24	190	TR12/16/12S	VETR12/16/12S	630	400	400	250	
	16	06	16	12.0	4	33	24.5	24.5	26.0	43	43	41	30	17	30	24	176	TR16/06/16S	VETR16/06/16S	630	400	400	250	
	16	08	16	12.0	5	33	24.5	24.5	26.0	43	43	41	30	19	30	24	208	TR16/08/16S	VETR16/08/16S	630	400	400	250	
	16	10	16	12.0	7	33	24.5	24.5	25.5	43	43	42	30	22	30	24	210	TR16/10/16S	VETR16/10/16S	630	400	400	250	
	16	12	16	12.0	8	33	24.5	24.5	25.5	43	43	42	30	24	30	24	386	TR16/12/16S	VETR16/12/16S	630	400	400	250	
	16	20	16	12.0	16	37	28.5	28.5	26.5	47	47	48	30	36	30	27	296	TR16/20/16S	VETR16/20/16S	420	400	400	250	
	20	10	20	16.0	7	37	26.5	26.5	29.5	48	48	46	36	22	36	27	553	TR20/10/20S	VETR20/10/20S	420	400	400	250	
	20	12	20	16.0	8	37	26.5	26.5	29.5	48	48	46	36	24	36	27	306	TR20/12/20S	VETR20/12/20S	420	400	400	250	
	20	16	20	16.0	12	37	26.5	26.5	28.5	48	48	47	36	30	36	27	285	TR20/16/20S	VETR20/16/20S	420	400	400	250	
	20	25	20	16.0	20	42	31.5	31.5	30.0	53	53	54	36	46	36	36	544	TR20/25/20S	VETR20/25/20S	420	400	400	250	
	25	16	25	20.0	12	42	30.0	30.0	33.5	54	54	52	46	30	46	36	556	TR25/16/25S	VETR25/16/25S	420	400	400	250	
25	20	25	20.0	16	42	30.0	30.0	31.5	54	54	53	46	36	46	36	544	TR25/20/25S	VETR25/20/25S	420	400	400	250		
25	30	25	20.0	25	49	37.0	37.0	35.5	61	61	62	46	50	46	41	791	TR25/30/25S	VETR25/30/25S	420	400	400	250		

* S1 - Dimensions may vary according to the forged body